

We are pleased to provide you with the Fiscal Year 2010/11 issue of NOVA's **Workforce Index** for the city of Los Altos. This biannual report presents a summary of the services that were provided to the residents and businesses of Los Altos between July 2010 and June 2011, as well as a snapshot of workforce and demographic data for the city and region.

Although the cities of northern Santa Clara County continue to experience the challenges of a depressed economy and a mixed employment outlook, the NOVA Workforce Board remains committed to the City of Los Altos and the entire Silicon Valley region. The Board's purpose of supporting workforce mobility by easing workers' transitions throughout the career cycle has never been more essential as Silicon Valley continues the transition from an age of manufacturing to one of innovation and increased entrepreneurship.

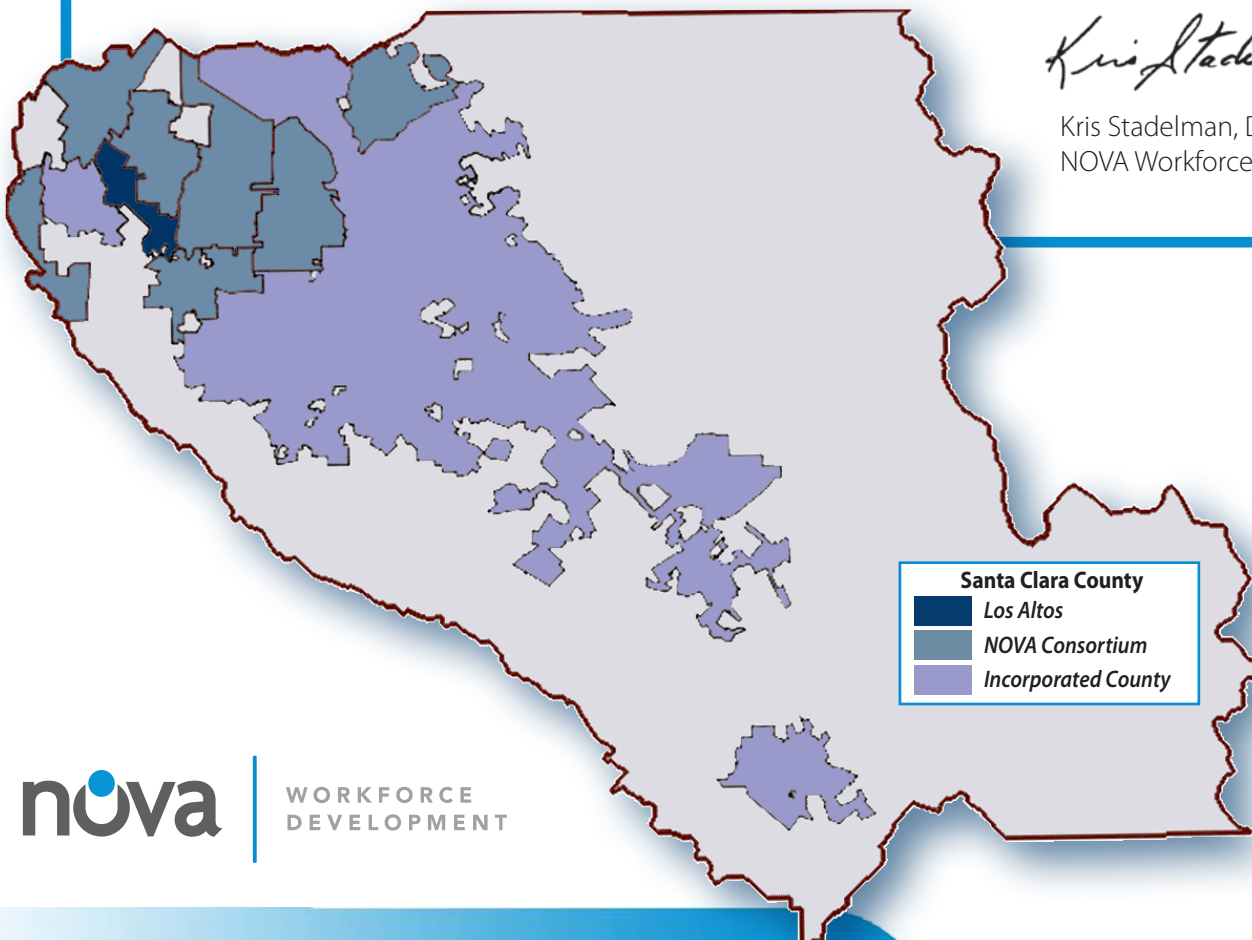
As the demands of the workforce and the business community shift, NOVA remains steadfast in its service to you and the Los Altos community. It is with Los Altos's support that we are able to effectively reach out to and support the thousands of job seekers in need of assistance. We are grateful for this support and look forward to continuing this collaborative relationship in the coming year.

If you would like to learn more about NOVA, the services we provide, and the impact we have on your community, we invite you to contact us. We are, after all, **your** workforce investment board.

In partnership,

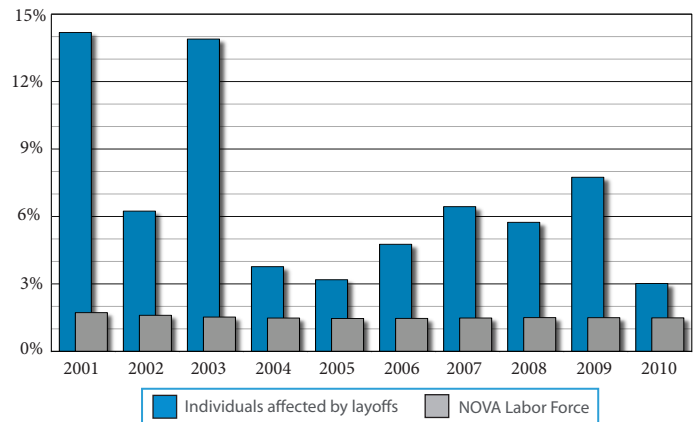
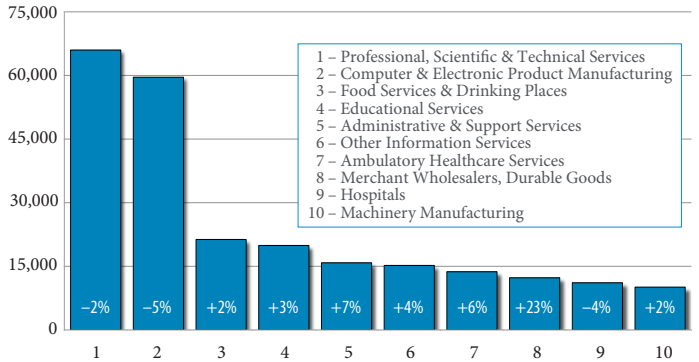


Kris Stadelman, Director
NOVA Workforce Board



Workforce Characteristics

Largest Industry Sectors (employed individuals; Q2 2010) & Change (Q2 2009–Q2 2010)² NOVA's Share of Layoffs & Labor Force relative to California (fiscal year data)³



NOVA Client Data¹

NOVA Client Data reflects services provided to Los Altos residents and businesses by NOVA from June 2010 through July 2011.

Universal Services

CONNECT! Job Seeker Center

Los Altos residents registered as new members	159
Total registered Los Altos residents	277
Services accessed by Los Altos residents	
• Residents accessing drop-in career advising	126
• Residents attending job-search workshops	399
ProMatch: Total Los Altos residents utilizing this professional networking program	35

Youth@Work (ages 16–24)

Los Altos youth receiving counseling assistance	1
Los Altos youth attending workshops	6

Eligibility-based Programs

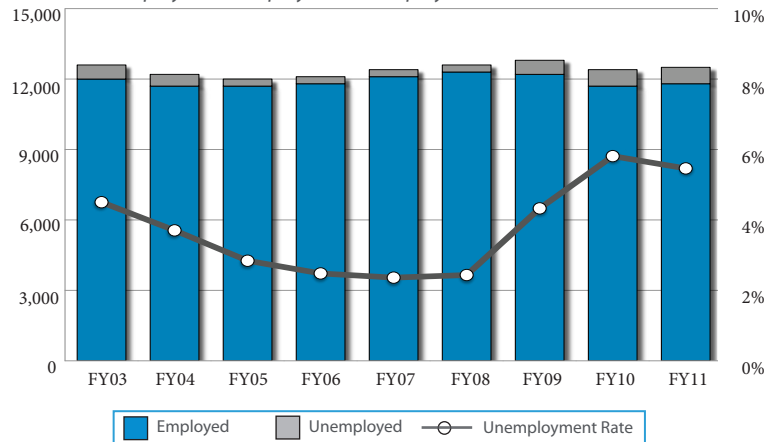
Los Altos residents enrolled in adult services	277
Los Altos residents enrolled in youth services	6

EDD's Labor Force Data⁴

Labor Force Data provides the number of Los Altos residents employed and unemployed in June 2003 and June 2011, and the changes reflected in this eight-year span.

Labor force (2003)	12,300
Labor force (2011)	12,600
• Change in labor force (2003–11)	+ 300
• Percent change (2003–11)	+ 2 %
Employed (2003)	11,800
Employed (2011)	11,900
• Change in employed (2003–11)	+ 100
• Percent change (2003–11)	+ 1 %
Unemployed (2003)	500
Unemployed (2011)	700
• Change in unemployed (2003–11)	+ 200
• Percent change (2003–11)	+ 40 %
Unemployment rate (2003)	4.1 %
Unemployment rate (2011)	5.6 %

Labor Force: Employed, Unemployed & Unemployment Rate (Los Altos, annual data)⁴



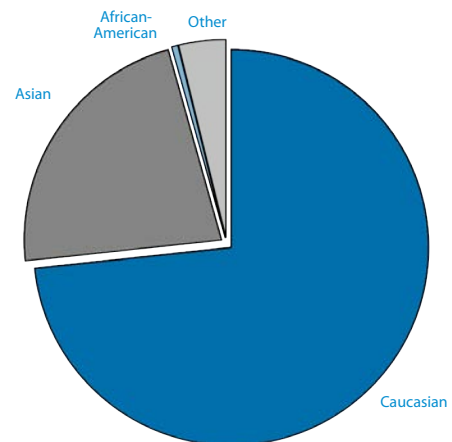
1. NOVA Management Information Systems (2011)
 2. U.S. Census Bureau, Local Employment Dynamics (Avg. quarterly employment: Q2 2009–Q2 2010)
 3. California Employment Development Dept., WARN data (2011)
 4. California Employment Development Dept., Labor Market Information Division (2011; July–June data)
 5. U.S. Census Bureau, American Community Survey, Five-Year Estimate (2005–09)

The data sets displayed on this page provide demographic, social, and economic information and the respective changes over time. When data is not city-specific, data is depicted at a wider geographic level. New census data will be available for all geographies later in 2011.

Demographic Characteristics⁵

Population (2003) ⁶	27,655
Population (2011) ⁶	29,176
• Change in population (2003–11)	+ 1,521
• Average annual growth rate (2003–11)	+ 1 %
Estimated daytime population (2000) ⁷	25,818
Working-age population (16+)	22,303
Median age	45.3
Share of population under age 18	28 %
Share of population 65 and older	19 %
Gender ratio [Male : Female]	1.00 : 1.07
Hispanic/Latino ethnicity (independent of race)	4 %

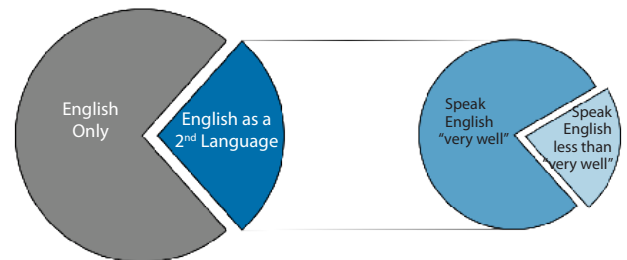
Racial Distribution (Los Altos, 2005–09 estimate)⁵



Social Characteristics⁵

Educational attainment (cumulative share of population 25+):	
• High school diploma or equivalent and higher	98 %
• Bachelor's degree and higher	77 %
• Graduate/Professional degree and higher	14 %
Individuals with a disability (population aged 21–64) ⁸	1,343
• Share of these individuals employed	69 %
Foreign-born (share of total population)	23 %
• Share of these individuals entering U.S. 2000 or later	9 %

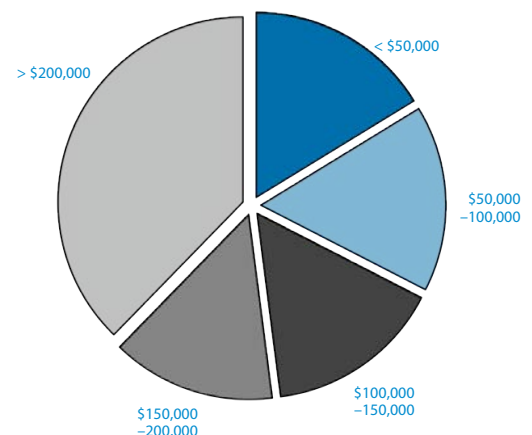
Language Spoken at Home (Los Altos, 2005–09 estimate)⁵



Economic Characteristics⁵

Total households	10,355
Median household income	\$ 155,466
Average household size	2.7
Median income by gender:	
• Male full-time, year-round workers	\$ 100,000+
• Female full-time, year-round workers	\$ 54,583
Per capita income	\$ 77,592
Poverty status:	
• Federal poverty threshold (family of four, 2007) ⁹	\$ 22,350
• Share of families below poverty line	2 %
• Share of individuals below poverty line	2 %
Consumer Price Index (San Francisco-Oakland-San Jose MSAs) ¹⁰	
Consumer Price Index (December 2001)	190.6
Consumer Price Index (December 2010)	227.6
• Change in Consumer Price Index (2001–10)	+ 19 %

Household Income Distribution (Los Altos, 2005–09 estimate)⁵



6. California Dept. of Finance (2011)
 7. U.S. Census Bureau, Estimated Daytime Population (2000)
 8. U.S. Census Bureau, Census 2000
 9. U.S. Department of Health and Human Services (2011)
 10. U.S. Bureau of Labor Statistics (Benchmark: 1982–84 = 100)

Developing a skilled workforce for Silicon Valley

About NOVA

NOVA is a nonprofit, federally funded employment and training agency that provides customer-focused workforce development services to job seekers and businesses throughout northern Santa Clara County. We work closely with local businesses, educational institutions, training providers, community-based organizations, and government to ensure that our programs provide opportunities that build the knowledge, skills and attitudes necessary to address the unique workforce needs of Silicon Valley.

Services to job seekers and businesses include:

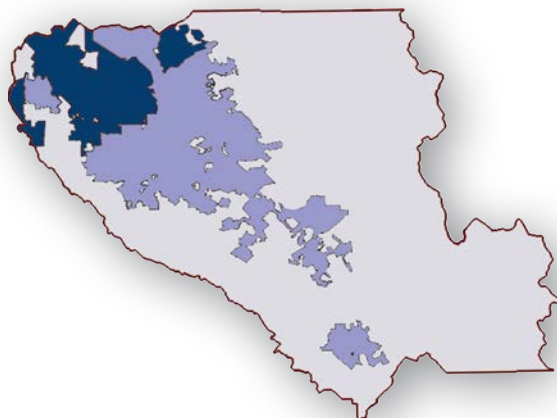
- One-stop resource center for job seekers
- Job-search & interviewing workshops
- Labor market research
- Youth@Work online job-listing site
- Pre-layoff assistance & outplacement services
- Staffing & recruitment
- Employee training & retention services
- Professional development programs

NOVA is directed by the NOVA Workforce Board, which works on behalf of a seven-city consortium composed of Cupertino, Los Altos, Milpitas, Mountain View, Palo Alto, Santa Clara, and Sunnyvale.



WORKFORCE
DEVELOPMENT

505 West Olive Avenue, Suite 550
Sunnyvale, CA 94086
408-730-7232
www.novaworks.org



Purpose Statement

The purpose of NOVA is to support the mobility of the workforce by easing workers' transitions from opportunity to opportunity throughout the cycles of their careers. To advance transitions with economic sustainability, NOVA provides:

- *advocacy for necessary infrastructure to support workers while unemployed between opportunities;*
- *navigation tools for the new labor market;*
- *just-in-time labor market information about the skills in demand;*
- *skill building and enhancements to match market demand; and*
- *interconnected support system for multiple career pathways for youth.*

Contact Info

Visit NOVA at www.novaworks.org or contact us at 408-730-7232 or info@novaworks.org to find out more about what we do or to learn how you can contribute to **developing a skilled workforce for Silicon Valley.**